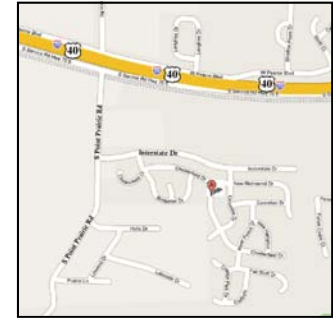




### Stone Meadows Sales Office

404 Fuller Drive  
Wentzville, MO 63385  
Phone/Fax: 636-332-0052



## VS1216: Located in Wentzville, MO.

1,216 Square Feet, 2 Story, 2 Bedroom, 1.5 Bath, Base Price \$107,500 - w/o basement



Elevation A



Elevation B



Elevation C



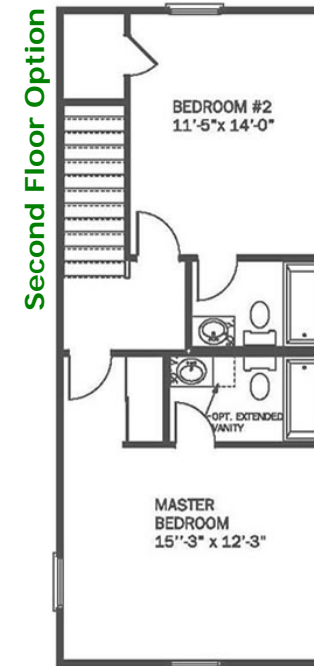
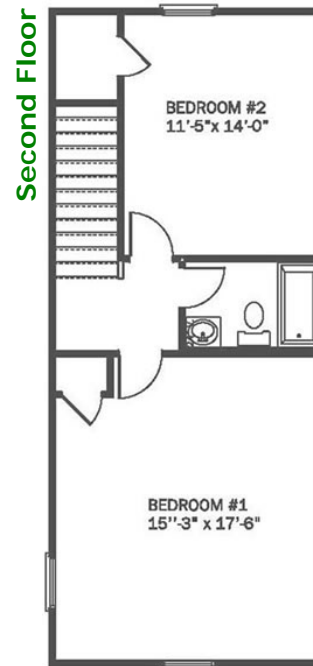
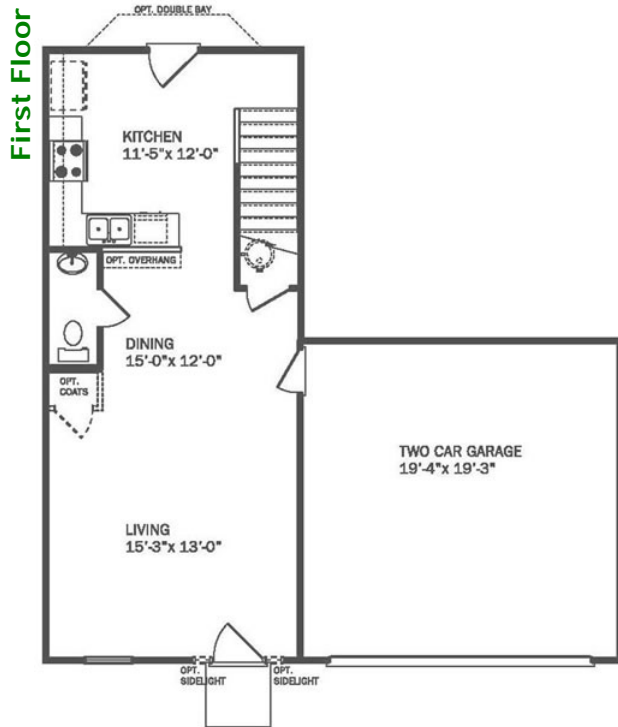
Elevation D



Elevation E



Elevation F



Artist's conceptual rendering. Actual construction may vary. Side entry garages, dormers, fireplaces, bay windows, sunburst garage windows, transoms, window grills some windows, porch railings, brick front porches, raised foundations, and wing walls shown on front elevations are optional. Room size dimensions shown are approximate. Due to evolutionary changes in our design improvement process, we reserve the right to substitute materials of comparable quality.

